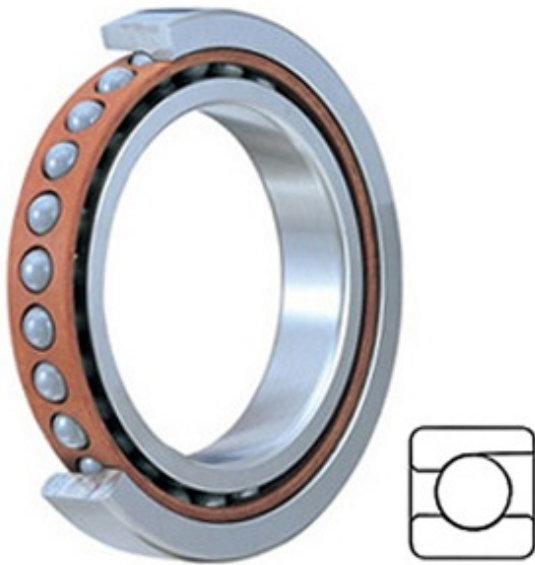




# WJE Bearing Manufacturing Co., Ltd.



2MM313WI Bearing 2D drawings and 3D CAD models

2.559 Inch | 65 Millimeter x 5.512 Inch | 140 Millimeter x 1.299 Inch | 33 Millimeter TIMKEN 2MM313WI Precision Ball Bearings

Bearing No. 2MM313WI

Category	Precision Ball Bearings
Inventory	0.0
Manufacturer Name	TIMKEN
Minimum Buy Quantity	N/A
Weight	2.102
EAN	0087796071759
Product Group	B04270
Enclosure	Open
Precision Class	ABEC 7   ISO P4
Material - Ball	Steel
Number of Bearings	1 (Single)
Contact Angle	15 Degree
Preload	None
Raceway Style	1 Rib Outer Ring
Cage Material	Phenolic
Rolling Element	Ball Bearing
Flush Ground	No
Inch - Metric	Metric
Other Features	Single Row   Angular Contact   Super High Precision
Long Description	65MM Bore; 140MM Outside Diameter; 33MM Width; Open Enclosure; ABEC 7   ISO P4 Precision; Steel Ball Material; 1 (Single) Bearings; 15 Degree



## WJE Bearing Manufacturing Co., Ltd.

	Contact Angle; Phenolic Cage Material; 1 Rib Outer Ring Ra
Category	Precision Ball Bearings
UNSPSC	31171531
Harmonized Tariff Code	8482.10.50.28
Noun	Bearing
Keyword String	Angular Contact Ball
Manufacturer URL	<a href="http://www.timken.com">http://www.timken.com</a>
Manufacturer Item Number	2MM313WI
Weight / LBS	4.631
B	1.299 Inch   33 Millimeter
d	2.559 Inch   65 Millimeter
D	5.512 Inch   140 Millimeter
d - Bore	65 mm
D - Outer Diameter	140 mm
Bearing Width	33 mm
do - Ball Diameter	23.81250 mm
C0 - Static Radial Rating	80500 N
Ce - Dynamic Radial Rating <sup>1</sup>	124000 N
Limiting Speed (Grease)	10500 rpm
Limiting Speed (Oil)	21000 rpm
Ball Type	STEEL
Cage Type	CR - Phenolic Outer Land Riding Cage
Bearing Weight	2.101 Kg
Design Units	METRIC
R - Inner Ring To Clear Radius <sup>2</sup>	2.0 mm
r - Outer Ring To Clear Radius <sup>3</sup>	2.0 mm
da - Inner Ring Backing Diameter	79.800 mm



## WJE Bearing Manufacturing Co., Ltd.

Da - Outer Ring Backing Diameter	126.800 mm
-------------------------------------	------------