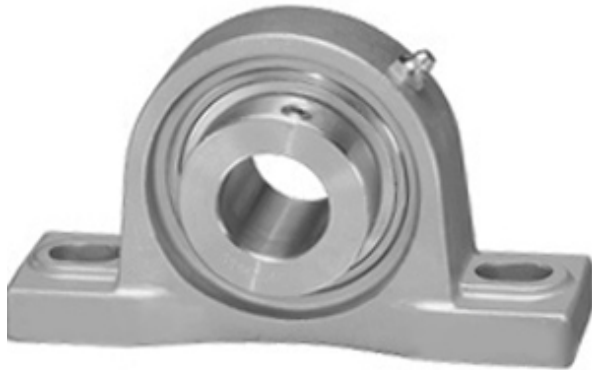




# WJE Bearing Manufacturing Co., Ltd.

0.984 Inch | 25 Millimeter x 1.622 Inch | 41.2  
Millimeter x 1.437 Inch | 36.5 Millimeter IPTCI  
SNASP 205 25MM Pillow Block Bearings



SNASP 205 25MM Bearing 2D drawings and 3D CAD models

Bearing No. SNASP 205 25MM

Category	Pillow Block Bearings
Inventory	0.0
Manufacturer Name	IPTCI BEARINGS
Minimum Buy Quantity	N/A
Weight	0.997
Product Group	M06110
Number of Mounting Holes	2
Mounting Method	Eccentric Collar
Housing Style	2 Bolt Pillow Block
Rolling Element	Ball Bearing
Housing Material	Stainless Steel
Expansion / Non-expansion	Non-expansion
Mounting Bolts	3/8 Inch
Relubricatable	Yes
Insert Part Number	SNA205
Seals	B Seal
Housing Configuration	1 Piece Solid
Inch - Metric	Metric
Other Features	Single Row   Corrosion Resistant   Has Slinger
Long Description	2 Bolt Pillow Block; 25MM Bore; 36.5MM Base to Center Height; Eccentric Collar Mount; Ball Bearing; Relubricatable; Stainless Steel; B Seal; Non-expansion



## WJE Bearing Manufacturing Co., Ltd.

Category	Pillow Block
UNSPSC	31171511
Harmonized Tariff Code	8483.20.40.40
Noun	Bearing
Keyword String	Pillow Block
Manufacturer URL	<a href="http://www.iptci.com">http://www.iptci.com</a>
Manufacturer Item Number	SNASP 205 25MM
Weight / LBS	2.2
B	1.437 Inch   36.5 Millimeter
Nominal Bolt Center to Center	4.1 Inch   105 Millimeter
Bolt Spacing Minimum	0 Inch   0Millimeter
D	1.622 Inch   41.2 Millimeter
d	0.984 Inch   25 Millimeter
Bolt Spacing Maximum	0 Inch   0Millimeter
Actual Bolt Center to Center	4.1 Inch   105Millimeter