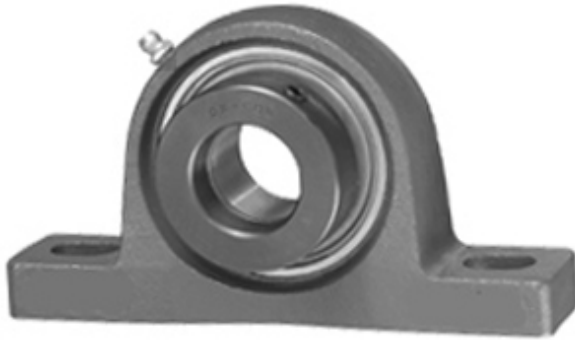




WJE Bearing Manufacturing Co., Ltd.

0.625 Inch | 15.875 Millimeter x 1.126 Inch | 28.6 Millimeter x 1.188 Inch | 30.175 Millimeter IPTCI SALP 202 10 G Pillow Block Bearings



Bearing No. SALP 202 10 G

SALP 202 10 G Bearing 2D drawings and 3D CAD models

Category	Pillow Block Bearings
Inventory	0.0
Manufacturer Name	IPTCI BEARINGS
Minimum Buy Quantity	N/A
Weight	0.408
Product Group	M06110
Number of Mounting Holes	2
Mounting Method	Eccentric Collar
Housing Style	2 Bolt Pillow Block
Rolling Element	Ball Bearing
Housing Material	Cast Iron
Expansion / Non-expansion	Non-expansion
Mounting Bolts	3/8 Inch
Relubricatable	Yes
Insert Part Number	SA202-10G
Seals	K Seal
Housing Configuration	1 Piece Solid
Inch - Metric	Inch
Other Features	Single Row Light Duty Narrow Inner Race
Long Description	2 Bolt Pillow Block; 5/8" Bore; 1-3/16" Base to Center Height; Eccentric Collar Mount; Ball Bearing; Relubricatable; Cast Iron; K Seal; Non-expansion



WJE Bearing Manufacturing Co., Ltd.

Category	Pillow Block
UNSPSC	31171511
Harmonized Tariff Code	8483.20.40.40
Noun	Bearing
Keyword String	Pillow Block
Manufacturer URL	http://www.iptci.com
Manufacturer Item Number	SALP 202 10 G
Weight / LBS	0.9
B	1.188 Inch 30.175 Millimeter
Nominal Bolt Center to Center	3.4 Inch 86 Millimeter
d	0.625 Inch 15.875 Millimeter
Actual Bolt Center to Center	3.4 Inch 86Millimeter
D	1.126 Inch 28.6 Millimeter
Bolt Spacing Minimum	0 Inch 0Millimeter
Bolt Spacing Maximum	0 Inch 0Millimeter