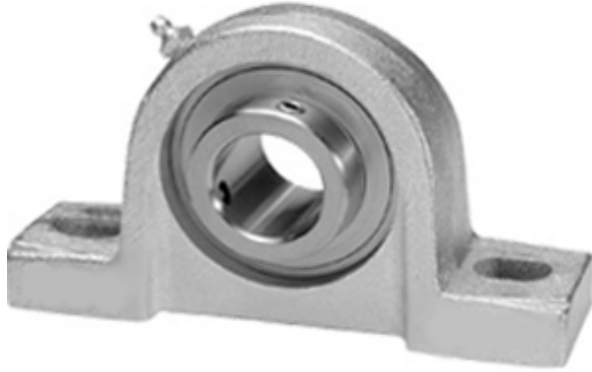




WJE Bearing Manufacturing Co., Ltd.

1.378 Inch | 35 Millimeter x 1.689 Inch | 42.9 Millimeter x 1.874 Inch | 47.6 Millimeter IPTCI CUCNPP 207 35MM Pillow Block Bearings



CUCNPP 207 35MM Bearing 2D drawings and 3D CAD models

Bearing No. CUCNPP 207 35MM

Category	Pillow Block Bearings
Inventory	0.0
Manufacturer Name	IPTCI BEARINGS
Minimum Buy Quantity	N/A
Weight	1.82
Product Group	M06110
Number of Mounting Holes	2
Mounting Method	Set Screw
Housing Style	2 Bolt Pillow Block
Rolling Element	Ball Bearing
Housing Material	Nickel Coated Cast Iron
Expansion / Non-expansion	Non-expansion
Mounting Bolts	1/2 Inch
Relubricatable	Yes
Insert Part Number	CUC207
Seals	B Seal
Housing Configuration	1 Piece Solid
Inch - Metric	Metric
Other Features	Single Row Corrosion Resistant Hard Chrome Coated Insert High Base Has Slinger Optional Locking Collar
Long Description	2 Bolt Pillow Block; 35MM Bore; 47.6MM Base to Center Height; Set Screw Mount; Ball Bearing;



WJE Bearing Manufacturing Co., Ltd.

	Relubricatable; Nickel Coated Cast Iron; B Seal; Non-expansion
Category	Pillow Block
UNSPSC	31171511
Harmonized Tariff Code	8483.20.40.40
Noun	Bearing
Keyword String	Pillow Block
Manufacturer URL	http://www.iptci.com
Manufacturer Item Number	CUCNPP 207 35MM
Weight / LBS	4
d	1.378 Inch 35 Millimeter
B	1.874 Inch 47.6 Millimeter
Bolt Spacing Minimum	0 Inch 0Millimeter
Bolt Spacing Maximum	0 Inch 0Millimeter
Actual Bolt Center to Center	5 Inch 127Millimeter
D	1.689 Inch 42.9 Millimeter
Nominal Bolt Center to Center	5 Inch 127 Millimeter