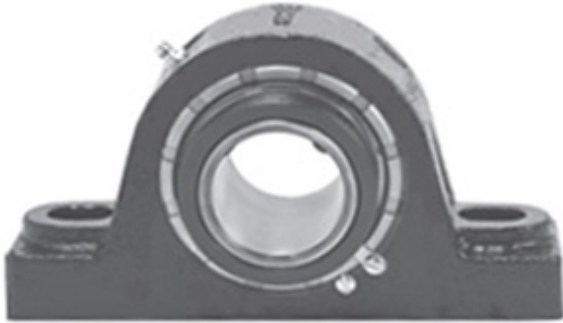




WJE Bearing Manufacturing Co., Ltd.

3.438 Inch | 87.325 Millimeter x 4.29 Inch |
108.966 Millimeter x 3.75 Inch | 95.25 Millimeter
LINK BELT PB22655H Pillow Block Bearings



Bearing No. PB22655H

PB22655H Bearing 2D drawings and 3D CAD models

Category	Pillow Block Bearings
Inventory	0.0
Manufacturer Name	REXNORD
Minimum Buy Quantity	N/A
Weight	19.07
EAN	0662327984939
Product Group	M06288
Number of Mounting Holes	2
Mounting Method	Tapered Adapter Sleeve
Housing Style	2 Bolt Pillow Block
Rolling Element	Spherical Roller Bearing
Housing Material	Cast Iron
Expansion / Non-expansion	Non-expansion
Mounting Bolts	7/8 Inch
Relubricatable	Yes
Insert Part Number	B22655HL
Seals	Floating Labyrinth
Housing Configuration	1 Piece Solid
Inch - Metric	Inch
Other Features	Double Row Extended Inner Race
Long Description	2 Bolt Pillow Block; 3-7/16" Bore; 3-3/4" Base to Center Height; Tapered Adapter Sleeve Mount; Spherical Roller Bearing;



WJE Bearing Manufacturing Co., Ltd.

	Relubricatable; Cast Iron; Floating Labyrinth; Non- expansion
Category	Pillow Block
UNSPSC	31171511
Harmonized Tariff Code	8483.20.40.80
Noun	Bearing
Keyword String	Pillow Block
Manufacturer URL	http://www.rexnord.com
Manufacturer Item Number	PB22655H
Manufacturer Internal Number	5898493
Weight / LBS	42
Actual Bolt Center to Center	10 Inch 254Millimeter
Bolt Spacing Minimum	0 Inch 0Millimeter
Bolt Spacing Maximum	0 Inch 0Millimeter
B	3.75 Inch 95.25 Millimeter
Nominal Bolt Center to Center	10 Inch 254 Millimeter
D	4.29 Inch 108.966 Millimeter
d	3.438 Inch 87.325 Millimeter